

...because our community cares

---

Humility of Mary Shelter, Inc.  
Annual Report

July 1, 2012 - June 30, 2013



## MISSION STATEMENT

Humility of Mary Shelter, Inc. is an emergency shelter providing temporary housing and services that offer the opportunity for men and women experiencing homelessness to become emotionally, mentally, and physically more stable.

## PARTICIPANT RIGHTS

### **All HMSI participants have the right...**

- To be treated at all times with respect, dignity, and concern for their well-being.
- To not be judged for any behavior they have used to cope with life experiences.
- To refuse services, unless failure to receive services places them at risk of harm to self or others.
- To be treated as collaborators in their own service plans.
- To informed consent before receiving any services.
- To not be discriminated against based on race, ethnicity, creed, color, religion, national origin, ancestry, sex, sexual orientation, gender, gender identity, genetics, familial status, marital status, age, mental or physical disability, or unfavorable discharge from the military service.

## Table of Contents

	Page
Participant Profile	5
Program Outcomes	6
New Development Committee and SOAR	12
Financial Summary and Grant Awards	13
Donor Honor Roll	14
Words from the Finance Director	21
Private Grants and James and Anita Jenkins	22
What will you sell in your lemonade stand	23
Night at the Shelter and SleepOut 2013	24
Making a Difference	25
In appreciation for 23 years of service	28
A Letter from the Board of Directors	29
<b>We're not LION we have great volunteers</b>	30
Assistant Program Director and Grants Manager	31
Staff	31

## EQUAL OPPORTUNITY STATEMENT and NON - DISCRIMINATION POLICY

Humility of Mary Shelter, Inc. does not discriminate in the acceptance of participants, employment of personnel, or in any other respect on the basis of race, ethnicity, creed, color, religion, national origin, ancestry, sex, sexual orientation, gender, gender identity, genetics, familial status, marital status, age, mental or physical disability, or unfavorable discharge from the military service. HMSI is in compliance with the Americans with Disabilities Act.



# Our Services Include

- Emergency Shelter for adult men and women with 78 beds (35 beds for men, 26 beds for women and 17 beds for veterans), plus 4 overflow mats for a total capacity of 82.
- The shelter is open 7 days a week, 24 hours a day, 365 days a year.
- Computer Lab - open to participants and the public for classes, job searches and resume building.

Day Shelter is open from 7am - 6pm Monday - Friday. The Day Shelter provides both participants and community members with a safe place to come in from the cold or heat.

## Service Coordination

At the core of all HMSI programs is the philosophy of Service Coordination. HMSI Service Coordinators work with program participants to help them develop individual service plans with goals to increase self-determination, increase skills and income, and obtain and remain in permanent housing. Participants and Service **Coordinators work as partners to assess the participant's strengths, obstacles, and resources, and use that information to help the participant achieve their goals.**

## Shelter Service Coordination

Our Shelter Service Coordination program serves homeless adults staying at the Humility of Mary Shelter, Inc. This program helps

participants to address the most urgent issues that caused them to experience homelessness, including needs for identification documents, transportation, mental and physical health care, and income.

## Transitional Housing Program

The Transitional Housing Program is a 17 bed program and provides up to twenty four months of service coordination and housing to homeless persons with disabilities or other special needs that have made it more difficult for them to find appropriate housing. Participants benefit from bi-weekly program meetings, support groups, and mental health counseling.

## Veterans Transitional Program

The 17-bed Veterans Transitional Program provides service coordination and housing to homeless veterans for up to 24 months. Working with the local Veterans Affairs Homeless Outreach Center, the program allows qualifying veterans to take advantage of services, such as case management, education, job training, crisis intervention and counseling.

## Veterans Accessing Long-term Opportunities and Resources (VALOR)

The VALOR program serves very low-income veterans from Scott or Rock Island Counties who are homeless or at imminent risk of becoming so. This program will expand to include Henry County, IL and Mercer County, IL. as of October 1, 2013. Participants work closely with staff to rapidly return to permanent housing, or to maintain their current housing, while addressing the issues that led to their housing crisis. The VALOR program is a natural extension of our successful Veterans Transitional Housing program. The VALOR office is located within Cobblestone Place at 1212 West 3rd Street, Davenport.

**Services continued on next page.....**

### Permanent Housing Program (PH)

Our Permanent Housing Program assists homeless persons who have a disabling condition which impedes their ability to live independently. Eligible participants may include those experiencing challenges with severe and persistent mental illness, persons in recovery from drug or alcohol dependence, and persons with chronic illness or physical disabilities. Participants live in their own apartment, pay a portion of their income for rent, and work with their service coordinator on long-term goals. This program was able to add 2 units during this fiscal year bringing the total units to 21.



### Housing First Program (HF)

Our Housing First Program is the only program of its kind in the Quad Cities. Housing First breaks the cycle of homelessness by placing some of the most vulnerable and at-risk chronically homeless individuals into permanent housing. Participants pay a portion of their income for rent, and engage in service coordination, counseling, and other supportive services which help them remain in stable housing. This program currently has 11 Units.

### Using Strategic Knowledge to Address Homelessness in the Quad Cities and Surrounding Communities

The Community Foundation of the Great River Bend and the United Way of the Quad Cities Area recently published a Request for Proposal (RFP) to examine homelessness in the Quad Cities.

In response, Humility of Mary Shelter Director Dr. Julie Bockenstedt teamed up with Dr. Carol Coohy, Dr. Megan Gilster and several research assistants from the University of Iowa to submit a proposal examining the issue – we are pleased to report that this research team was awarded the funding and the project is currently underway. The project is using existing data to examine information on the homeless population in the Quad Cities and the surrounding area on several individual-, household-, and community-level characteristics, and to help understand how people who are chronically homeless differ from people who are not chronically homeless. The research team will present and facilitate a discussion of their findings, with the United Way of the Quad Cities Area and the Community Foundation of the Great River Bend, in a special meeting of community stakeholders in the fall of 2013.



Humility of Mary Shelter, Inc. - Participant Profile  
*The HMSI participant profile provides basic demographics and some challenges faced by participants when they entered the HMSI program.*

From July 1, 2012 through June 30, 2013, HMSI's emergency shelter provided shelter to 698 individuals. The average age of individuals entering shelter was approximately 43 years old (minimum= 18 years old, maximum= 78 years old).

Twenty-seven percent of shelter guests were female. More than 15% were veterans.

Of all guests, 61% identified as Caucasian, 35% as African American/Black, 3% Native American, and 1% Asian. Six percent identified Hispanic/Latino ethnicity.

Approximately 22% were living with mental illness, 19% had alcohol and/or drug issues, 15% were coping with physical mobility limits, 10% suffered chronic health problems, and 3% had developmental disabilities. More than 18% had experienced domestic violence; of those, 60% had experienced domestic violence in the past 12 months.

Whereas 50% reported never experiencing homelessness before, more than 16% were chronically homeless (at least four episodes of homelessness in the past three years, or experiencing at least one full year of ongoing homelessness currently).

Top reasons given for this homeless episode included unemployment (18%), relocation (17%), eviction (16%), and family breakup (15%).

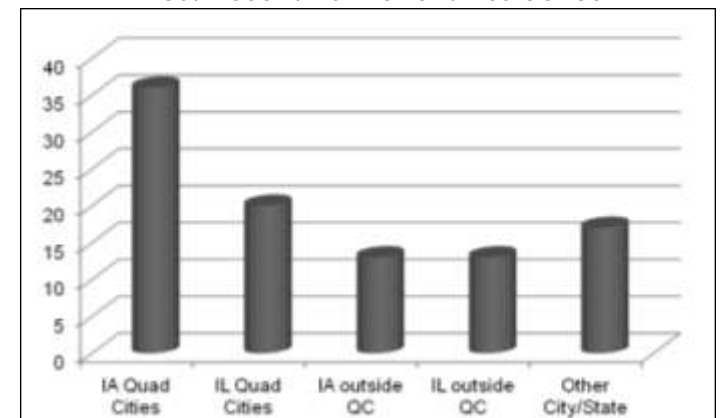
Most recent permanent residence included the Iowa-Quad Cities (36%), Illinois-Quad Cities (20%), Iowa-outside the Quad Cities (13%), Illinois-outside the Quad Cities (13%), or some other city/state (17%).

Nearly 19% had earned a GED, 41% had a high school diploma, and 12% had post-secondary education.

Nearly 14% were employed at shelter entry. Fifty-six percent had received no cash income in the past 30 days.

Please also take a look at our program outcomes (on page 6), which indicates the changes that individuals who enrolled in our HMSI programs were able to make during participation in HMSI programs.

Most Recent Permanent Residence



## Program Outcomes - analyzed by Julie Williams, PhD, ACSW, LMSW

Humility of Mary Shelter, Inc. (HMSI) formally evaluates Program Outcomes on an annual basis and uses the results to report on the extent that program participants are progressing and succeeding through the programs. Outcomes analyses are also used to improve existing services, distinguish program strengths, identify staff and program needs, justify budgets, and assist in developing long-range agency plans.

**HMSI's Program Outcomes are based on three main goals:**

1. Program participants access mainstream and self-enrichment resources,
2. Program participants with education/job training or employment goals make progress on those goals, and
3. Program participants enter housing of their choice at departure.

Program participants in this report were adult men and women actively enrolled in an HMSI program between April 1, 2012 and March 31, 2013. Each participant completed a maximum of three *Outcome Assessment Surveys* with their service coordinator at program entry, at a specified point during the course of the program, and at program departure.

### *The HMSI Programs*

Program Outcomes are measured on four HMSI programs, two of which are Permanent Supportive Housing (PSH) programs: Permanent Supportive Housing for persons living with disabilities, and Housing First, which provides Permanent Supportive Housing for persons who are chronically homeless. Each of the PSH programs provides long-term support for its residents.

The third program is a Shelter Service Coordination – Supportive Services Only program providing individuals with support services for **approximately 30 to 60 days. In this program, HMSI service coordinators provide support services to persons living at HMSI's** emergency shelter and to individual and family emergency shelter residents of The Salvation Army. The short-term nature of the program allows a higher number of participants to be served over the course of a year.

The fourth program is a Transitional Housing (TH) program that provides persons in emergency shelter with structured programming and support services for up to 24 months. This program benefits participants who need more time to reach their goals. HMSI also provides a **TH program exclusively for the military's veteran population with funding provided by the Veteran's Administration.**

### *Participant Overview*

Between April 1, 2012 and March 31, 2013, 754 persons requested and received emergency shelter at HMSI, and 537 individuals and families entered HMSI programs. Of these, 91% participated in the emergency shelter's Shelter Service Coordination program (10% were families), 8% participated in the Transitional Housing program (5% were in the veterans program), and less than 1% participated in the Permanent Supportive Housing and Housing First programs.

Of those in HMSI programs, 32% of individuals were female. The median age of persons entering the HMSI programs was 43 years old (min= 18 years old, max= 78 years old; mean= 42 years old); the lower 10% of ages ranged from 18-22 years old and the top 10% of ages ranged from 58-78 years old. Races included Native American/Alaskan (2%), Asian (1%), African American/Black (42%), Pacific Islander/Hawaiian (< 1%), and Caucasian/White (63%). Seven percent identified with Hispanic/Latino ethnicity.

At program entry, 98% of individuals entering HMSI programs were literally homeless and 2% were at imminent risk of losing their housing. Nearly 41% of participants reported having never experienced homelessness before this episode, and 40% reported that this episode was their 2<sup>nd</sup> or 3<sup>rd</sup> episode of homelessness. Approximately 22% of program participants were experiencing chronic homelessness (defined as four or more homeless episodes in the past three years, or at least one year of continuous homelessness; more than 9% of participants were experiencing continuous homelessness for one year or longer). Seventy-three percent of participants had at least a high school diploma or GED and 50% had no income over the past month. Thirty-four percent of participants were survivors of domestic violence, with 29% suffering domestic violence within the past three months. Sixty-four percent of participants had a long-term disability involving one or more of the following: mental illness (50%), physical mobility (25%), chronic health condition (22%), alcohol abuse (11%), drug abuse (6%), or developmental disability (4%).

Nineteen percent of individuals had served in the military. Of those, 33% served in the Army, 26% served in the Navy, 19% served in the Marines, and 13% served in the Air Force. Six percent served during the period from the Korean War up to the Vietnam War (June 1950 to July 1964), 18% served in the Vietnam era (August 1964 to April 1975), 55% served in the post-Vietnam era (May 1975 to July 1991), 19% served in the Persian Gulf era to present (August 1991 to August 2011) and 2% served since September 2011.

Fifty-seven percent of program participants exited because they had completed the program, 22% of participants had reached the maximum time allowed in the program and were required to exit before program completion, 12% were asked to leave the program due to noncompliance with rules, and 9% left the program suddenly and without warning.

## Program Outcomes Evaluation Results

### *1. Program participants access mainstream and/or self-enrichment resources.*

Measure:

At least 65% of participants will access mainstream and/or self-enrichment resources.

Result:

Goal was met.

Summary of findings:

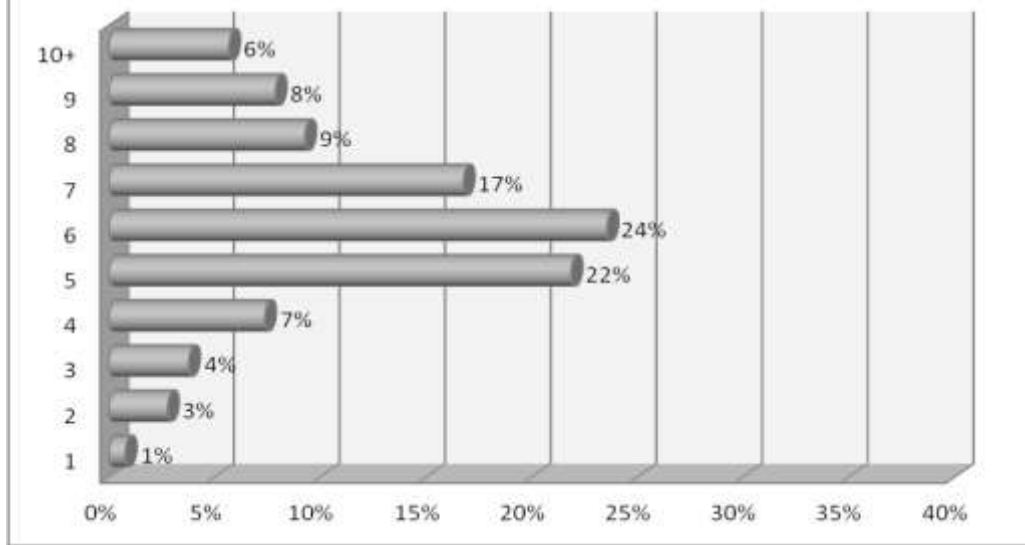
Mainstream resources are defined as general state and federal benefits available to qualified individuals; this report divides mainstream resources into two categories: cash benefit (SSI, SSDI, TANF, Veteran's Disability benefit, etc.) and noncash resources (Food stamps, Medicaid, Veteran's medical, etc). By program exit, 84% of participants were receiving noncash benefits and 29% were receiving cash

benefits from mainstream resources.

Self-enrichment resources include, but are not limited to, services such as life skills training, alcohol/drug services, HIV services, physical health services, and mental health services. Ninety-five percent of participants accessed at least one self-enrichment resource while in an HMSI program (Table 1). By program exit, 12% accessed life skills training, 18% accessed alcohol/drug services, less than 1% accessed HIV services, 77% accessed physical health care services, and 86% accessed mental health services. Additional resources offered and accessed included housing search assistance (83%), employment assistance (68%), housing cost assistance (21%), legal referral (7%), childcare assistance (7%), transportation assistance (85%), clothing assistance (92%), and hygiene assistance (98%).

Accessing assistance with these resources resulted in a significant increase of participants' ability to continue meeting basic needs by program exit. For example, participants significantly increased their earned income from program entry to program exit ( $p < .001$ ), participants significantly increased receipt of SSI from program entry to program exit ( $p = .018$ ), eligible participants significantly increased Temporary Assistance for Needy Families from program entry to program exit ( $p = .013$ ), and significantly more participants were receiving food stamps at program exit than program entry ( $\chi^2 = 255.01$ ,  $p < .001$ ).

**Figure 1. Number of mainstream/self-enrichment resources accessed by departing participants**





## *2. Program participants with education/job training or employment goals make progress on those goals*

### Measure:

At least 50% of participants with education, job training, or employment goals will make progress on those goals, and 20% of participants will be employed at program departure.

### Result:

Goal was met.

### Summary of findings:

Sixty-seven percent of all participants reported an education/job training goal (37%), employment goal (76%), or both (34%), with 51% making progress on their goals (Table 1). Participants with education/job training goals were enrolled in GED courses, a certificate program, vocational school, or college. Participants with employment goals were involved in preparing resumes, submitting applications, obtaining interview clothing, role playing/practicing interviews, interviewing, and test preparation. Twenty-one percent of participants who were unemployed at program entry obtained employment while in the HMSI program and 33% of all program participants were employed at program departure.

## *3. Program participants are entering housing of their choice at departure*

### Measure:

At least 80% of participants who enter Permanent Supportive Housing and Transitional Housing will remain in each program at least six months, respectively, and at least 65% of participants will enter housing of their choice at program departure.

### Result:

Goal was partially met.

### Summary of findings:

A full 100% of participants remained in the Permanent Supportive Housing program at least six months. For Transitional Housing participants, only 10% remained in the program at least six months; management will discuss with staff participant eligibility and expectations for the Transitional Housing program to ensure appropriate participants are enrolled into the program. Of all exiting Transitional Housing participants, 74% entered housing of their choice at program departure, including non-subsidized housing (33%), subsidized housing (3%), permanent move with friends or family (20%), temporary move with friends or family (5%), and psychiatric or substance abuse treatment facility (13%).

Across all programs, 65% of program participants entered housing of their choice at program departure (Table 1). Of all exiting Shelter Service Coordination – Supportive Services Only participants, 65% entered housing of their choice at program departure, including non-subsidized housing (8%), subsidized housing (15%), permanent move with friends or family (9%), temporary move with friends or family (14%), psychiatric or substance abuse treatment facility (4%), and transitional housing (15%). No participants exited Permanent Supportive Housing during the evaluation year.

## Goal Achievement over Time

Table 1 provides a comparison of Target Goals and actual Outcome results since HMSI began operations in 2008. Close examination of the table reveals the overall success of the shelter and shelter participants in consistently achieving their Outcome goals over the years:

Table 1. Comparison of target goals and actual outcome results: 2008 through 2013

	HUD Target (%)	HMSI Target (%)	2008-2009 Actual (%)	2009-2010 Actual (%)	2010-2011 Actual (%)	2011-2012 Actual (%)	2012-2013 Actual (%)*
Outcome goal # 1: Participants access mainstream and self-enrichment resources. <i>*Note: change in definitions in 2013</i>	n/a	65	97	98	97	97	84, 95
Outcome goal #2: Participants with education/job training or employment goals make progress on education/job training or employment goals.	n/a	50	82	64	63	68	67
• Participants with education/job training goals	n/a	25	13	22	30	29	37
• Participants with employment goals	n/a	65	69	72	75	76	76
• Participants employed by program departure	20	20	23	27	36	31	33
Outcome goal #3: Participants enter housing of their choice at departure.	65	65	66	72	73	58	65
• Participants remain in TH housing at least six months	80	80	n/a	n/a	n/a	n/a	10
• Participants remain in PSH at least six months	80	80	n/a	n/a	n/a	n/a	100

### Summary

Participants of HMSI met most of the targeted outcomes goals between April 1, 2012 and March 31, 2013 (Table 1). During this time, 537 individuals and families entered and exited HMSI programs. Of persons served, 91% participated in the emergency shelter's Shelter Service Coordination program, 8% participated in the Transitional Housing program, and less than 1% participated in the Permanent Supportive Housing and Housing First programs.

Thirty-two percent of program participants were female. The median age of persons entering the HMSI programs was 43 years old. Nineteen percent of individuals had served in the military.

Nearly 41% of individuals reported having never experienced homelessness before this episode and 22% were chronically homeless. Seventy-three percent of individuals had at least a high school diploma. Fifty percent were coping with mental illness. Seventeen percent reported abusing alcohol or drugs. Thirty-four percent of individuals had experienced domestic violence, with 29% suffering a domestic violence episode within the past three months.

By program exit, 84% of participants were receiving noncash benefits and 29% were receiving cash benefits from mainstream resources; 95% of participants accessed at least one self-enrichment resource while in an HMSI program.

Of the 67% of participants reporting an education/job training or employment goal, 51% made progress toward their goal. Thirty-three percent of all program participants were employed at program departure and 65% of participants entered housing of their choice at program departure. Table 1 revealed that HMSI and shelter participants consistently met or exceeded the targeted Outcome goals since HMSI began operations in 2008.

### *Conclusion*

Humility of Mary Shelter, Inc. (HMSI) is an emergency shelter providing temporary housing and services that offer the opportunity for men and women experiencing homelessness to become emotionally, mentally, and physically more stable. HMSI outcomes are based on (1) participants accessing mainstream and self-enrichment resources, (2) participants with education/job training or employment goals making progress on those goals, and (3) participants entering housing of their choice at departure.

The current report indicates that HMSI successfully achieved the majority of the program outcome goals for the year. It underscores the determination of the men and women in the HMSI programs to succeed in their recovery from homelessness and the continuing quality and effectiveness of the services provided by HMSI. Data collection for next year's program outcomes evaluation has already begun in order to continue providing valuable information to those parties interested and involved in caring for the men and women experiencing homelessness in our community.

## Year Starts with a New Development Committee

An enthusiastic group consisting of three Board members, four staff people, and ten volunteers met January 29, to talk about ways to promote fundraising events and educate the community about the shelter for men and women who are experiencing homelessness. Ideas from that first meeting included promotion of the “Night at the Shelter” and the “SleepOut,” contacts with churches and civic organizations, creation of a speaker’s bureau, identification of groups to target in the creation of business partners and corporate sponsors, and further development of the website.



Each month the development committee meets for one hour. A goal is to gain enough members that committees can be formed to work on projects between monthly meetings. Meanwhile one group is working on the “SleepOut” to be held at Modern Woodman Park on October 4<sup>th</sup> and 5<sup>th</sup>. Three volunteers are finishing training for the Speaker’s Bureau. Volunteer Kevin Gibbs has been working to develop promotional materials for the shelter. Sandi Frericks is working with churches to educate about the work of the shelter. Staff members who have been involved have been Julie Bockenstedt, Sandy Walters, Melanie Jones and Sr. Mary Ann Vogel. Other committee members over the past year have included: Deb Brix, Patti Jo Brown, Brian Dahlstrom, Dr. Paul Elias, Chairperson, Sr. Greta Fitzgerald, Cyndi Koenes, Kathryn McKnight, Olivia Ortega, Alicia Owens, Sr. Johanna Rickl, John Robinson, and Janet Rossmiller-Dolan. Anyone interested in participating in the work of the Development Committee may call the shelter and ask for Melanie, to get the date of the next meeting.

## HMSI Helps Individuals with High Needs to Obtain Housing: SOAR

HMSI is taking extra measures to help individuals with special needs obtain housing and services – one of these measures involves training and certifying staff in “SOAR”, which stands for *SSI/SSDI Outreach, Access, and Recovery...for persons who are homeless*.

SOAR is a national project sponsored by the Substance Abuse and Mental Health Services Administration (SAMHSA) designed to help eligible persons access Social Security income and disability benefits. SOAR was created specifically for persons who are homeless or at risk of homelessness and have a mental illness and/or a co-occurring substance use disorder. The SOAR program has been highly successful nationwide. SSI/SSDI applications often take years to process from start to finish with approval rates of only 30%, but with the SOAR approach, first time approval ratings average over 70% and many first-time approvals are received in only 3 months (see <http://www.prainc.com/soar/> for more information). SOAR trainings have only recently come to Iowa; several HMSI staff attended the requisite 16-hour SOAR training/certification sessions in May 2013, and several more attended training in July 2013. With SOAR-certified staff, HMSI is helping more individuals with special needs to obtain Social Security income and disability benefits so they can leave the shelter and move into permanent housing.

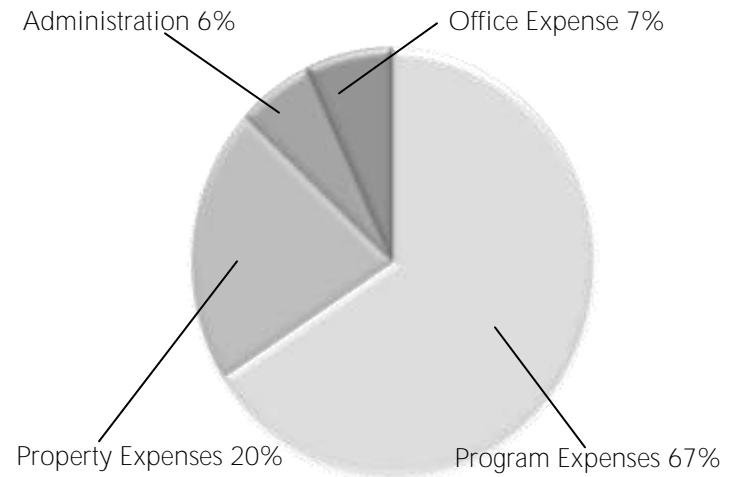
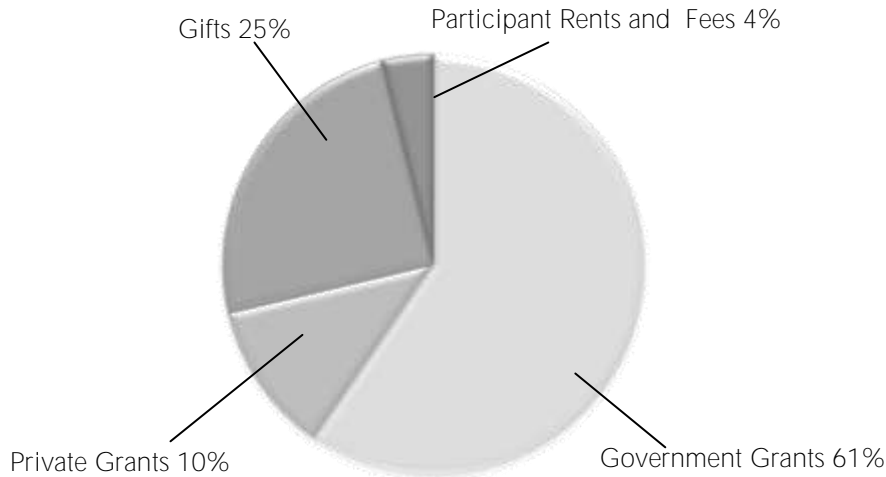
# Financial Summary for Fiscal Year 2013

Income - \$1,579,995.31

Government Grants	\$956,697.01	61%
Private Grants	\$162,332.50	10%
Gifts	\$397,895.82	25%
Participant Rents and Fees	\$63,069.98	4%

Expenses - \$1,538,190.71

Program Expenses	\$1,024,428.80	67%
Property Expenses	\$315,500.33	20%
Administration	\$91,383.72	6%
Office Expense	\$106,877.86	7%



## Grant Awards

### Government

- Davenport Community Development Block Grant
- Emergency Food and Shelter Program
- Iowa Emergency Solutions Grant
- Rock Island County Mental Health Board
- U.S. Department of Housing & Urban Development, Continuum of Care Program
- VA Grant and Per Diem
- VA Supportive Services for Veteran Families

### Private

- Amy Helpenstell Foundation
- Community Foundation of the Great River Bend

- Congregation of the Humility of Mary
- CROP Walk Grant
- Doris and Victor Day Foundation
- In From the Cold of the Quad Cities, Inc.
- Order of St. Benedict
- Riverboat Development Authority (through SCHC)
- Rock Island Gaming Grant
- St. Andrew Catholic Church, Blue Grass, IA
- Scott County Housing Council
- Scott County Regional Authority (through SCHC)
- United Way of the Quad City Area
- Wells Fargo

These grants were awarded in this reporting year.

## Donor Honor Roll

Humility of Mary Shelter, Inc. acknowledges the following individuals, businesses and foundations for their financial contributions received between July 1, 2012 and June 30, 2013. These generous contributions allow us to provide temporary and permanent housing and services to men and women experiencing homelessness in the Quad City Area. Every effort has been made to make the following Donor Honor Roll complete. If you note an error, please notify us so we can correct our records and give proper credit to our contributors.

---

### \$10,000 +

Calvin/Beverly Askeland  
Diocese of Davenport  
John Hynes  
James/Anita Jenkins  
Mary Rose Hawkinson Endowment  
Walter E. Neiswanger, MD  
Community Fund

First Presbyterian Church, Milan  
Dan/Judy Freeman  
Terry/Mary Gahagan  
Larry Gant  
Constance Hildebranski  
John Hoeller  
Holy Family Church, Davenport  
Manuel/Mary Honaker  
Illowa Bi-State Combined Federal  
Campaign

St. Andrew Catholic Church,  
Blue Grass  
St. Malachy Parish, Geneseo  
St. Matthew Lutheran Church,  
Davenport  
Richard Tharp  
THE National Bank  
Jack/Susan Thirtyacre  
Rosalie Tiedje  
Michael Vandaele  
Vietnam Veterans of America -  
Gateway Chapter 776,  
Bettendorf

William/Ruth Conway  
Kenneth Croken/Kathryn McKnight  
Timothy/Sandra Damm  
Davenport Jaycees Foundation  
Mary C. Dunn  
Michael/Frances Fiedler  
Sandra Fuller  
Richard/Julie Gacke  
Joanne Griesbach  
Paul/Mary Hittner  
Arthur/Joan Hostens  
Don/Marty Huber  
Iowa Finance Authority  
Mary Johnson

### \$9,999 - \$5,000

Charles B Preacher Foundation  
Hardiek Family Foundation  
Harris Family Charitable Gift Fund  
John Deere Classic  
Patricia Knopick  
**Joe/Joyce O'Rourke**  
St. Paul Lutheran Church,  
Davenport

Dorothy Janssen  
Kloppenborg Foundry &  
Fan Company  
Gary/Gerda Lane  
John/Phyllis MacKenzie  
McCarthy-Bush Foundation  
Modern Woodmen  
Dan/Katherine Molyneaux, Sr.  
Kenneth/Karen Ossian  
Constance Pailliotet, CHM

### \$999 - \$500

Alleman High School  
Michael Angelos  
Henry Anstey  
Area Welcome Club  
Ralph Baechle  
Richard/Lynn Batcher  
Margaret Bennett, CHM  
Judith Berkley  
Bettendorf Presbyterian Church  
Donald/Lauri Blough  
Steve Burns  
James Chamberlain  
Christ the King Catholic Church,  
Moline  
Jackie Christopher  
Paul Cioe/Nancy Nocek  
Bob/Angie Cleppe

James/Marcia Koehler  
Edward/Kathryn Lioen  
Vincent Liu/Paula Arnell  
Jeffrey/Holly McAvoyn  
Patricia J. Miller, CHM  
Molyneaux Insurance, Inc.  
Nestle Employees Outreach  
Paul/Kris Peacock  
Charles/Barbara Pekios  
Jim/Kathy Phelan  
Louis Pignatellie  
Quad City Bank & Trust Company  
Quad City Tennis Club  
James/Julie Quandt  
Mary Rehmann, CHM  
John/Patricia Robert  
Thomas/Jennifer Rowe  
Steven/Deborah Saleminck

### \$4,999 - \$1,000

Alcoa Foundation  
Paul Allen/Billie Greenwood  
Anonymous  
Thomas/Mary Bengé  
Madeline Beran  
Douglas/Mary Boemecke  
Patrick/Robin Brown  
Catherine P. Burns, CHM  
DaVita Dialysis  
Faith DeDecker  
Faith United Methodist Church,  
Davenport

Palmer College of Chiropractic  
Michal/Cha Hee Porubcin  
Potter Family Foundation  
Annette Rettig  
Mary Rickl  
Michael J. Rogers  
Sisters of St. Francis  
Sisters of the Order of St. Benedict,  
Rock Island  
Thomas Spiegel  
St. Ambrose University -  
Campus Ministry

## Donor Honor Roll

### \$999 - \$500 continued

Les/Carolyn Schjelderup  
 Thomas Stratman  
 Bernard Tadda/Cornelia Dowsett  
 James/Diane Tiedje  
 Trinity Lutheran Church, Davenport  
 TRUIST  
 Marie Vittetoe, CHM  
 Dixie Wirth

### \$499 - \$100

Advanced Business Systems, Inc.  
 Michael Agin  
 James Allemeier  
 Marguerite W. Allemeier  
 Alpha United Methodist Church  
 Gary/Phyllis Ammeter  
 Donald/Marelu Anderson  
 John/Jill Anderson  
 Richard/Kathleen Andresen, Jr.  
 Bob/Mary Ann Andrew  
 John/Joyce Arth  
 Jack/Angela Ashcraft  
 Marita Bartholome, CHM  
 William/Shelley Bausch  
 John/Ann Behrendt  
 David/Leanne Belk  
 Bell Animal Hospital  
 Mary Bell  
 Mark/Mary Bernhard  
 Charles/Sharon Bertram  
 Beulah Presbyterian Church  
 Michael/Audrey Birmingham  
 Jeff/Therese Bloom  
 Joseph Blough  
 Mary Blunck  
 Bruce/Marilyn Boardman

Dennis/Julie Bockenstedt  
 James/Carol Bowe  
 James/Linda Boyd  
 Roberta Brich, CHM  
 Robert/Eleanor Budd  
 James Bugos  
 Jean Burke  
 Larry/Ellen Burkholder  
 Bush, Motto, Creen, Koury  
 and Halligan, P.C.  
 Peter/Julie Bush  
 Gary Camp  
 Judith Carrara, CHM  
 Jean Case  
 Scott Caulpetzer/Sally Paustian  
 Daniel/Wilma Cavanaugh  
 Kurt Christoffel  
 Joseph/Catherine Clark  
 Committee to elect Jim Hancock  
 Richard/Sharon Corken  
 Karen Cornish  
 Juanita Cory  
 Mike/Jane Coryn  
 Rosemary Costello  
 Patrick/Randi Creedon  
 Greg/Sylvia Cripple  
 Jane Cronkleton  
 Danile/Rita Cunningham  
 Sherrill Custer  
 Nicholas/Nancy Czubara  
 Lowell/Lois Daasch  
 Brian/Polly Dahlstrom  
 Robert/Anne Dalton  
**Laurence/Donna D'Autremont**  
 Eldon/Stephanie Dirks  
 Phillip/Mary Ellen Doherty  
 William/Katherine Donohoo

Patricia Doyle  
 Dean/Connie Drexel  
 Michael/Rhonda Duchesneau  
 Martha Durham  
 Dan/Deann Ebener  
 Alan/Patricia Egly  
 Vincent/Janet Enslein  
 Estes Construction  
 Allaert/Mary Feeney  
 Donald/Sheila Feipel  
 Nancy Ferkel  
 Aileen Fiese  
 First Presbyterian Church, Port Byron  
 First United Methodist Church,  
 Port Byron  
 Harry Fisher  
 Mike/Ann Fisher  
 David/Ruth Fitzgerald  
 Thomas/Jane Follas  
 Craig/Nancy Foster  
 Harlan/Sue Fournier  
 Bud/Bonnie Fox  
 Thomas/Patricia Freiburger  
 Don/Sandra Frericks  
 Friends of Girl Scout Troop 8504  
 Steven Fye/Barbare Arland-Fye  
 Kyle/Candance Gagliardo  
 Mircea Gatlan/Alice Popescu-Gatlan  
 Geneseo Middle School  
 Genesis Health System  
 Sharon Getty  
 Paul/Cynthia Gilbert  
 Doris Glider  
 Miriam Goldsberry  
 John/Maureen Golinvaux  
 Omer Goodner  
 Paul/Kathleen Grask

Great Western Supply Company  
 Douglas/Jamie Grenier  
 Paul/Sheila Guse  
 Donald/Susan Hancock  
 Stacy Hanser/Teresa Hanser  
 Bill Happ  
 Lois Harker  
 Michael/Lois Harring  
 Theresa Hellman  
 Kathleen Henneberry, CHM  
 Francis Henricksen  
 Anthony Herold  
 Maxine Hoexter  
 William/Eda Hofmann  
 Glenn/Patricia Hotchkiss  
 Ron/Karen Huber  
 Gladys Hull  
 Patrick/Sharon Hunt  
 John Hyland  
 Joel/Elaine Irish  
 J.L. Brady Company, LLC  
 Duane Jack  
 Richard/Marieta Jacobs  
 William/Jean Jacobs  
 Rick/Bernadine Janik  
 Georgia Jecklin  
**Jeff's Car Corner**  
 Richard/Peggy Johnson  
 Marty/Sally Jones  
 Kurt/Cathy Jordan  
 Dennis/Marilyn Jorgenson  
 Judith Kasper  
 James Kay  
 Edwin/Kendra Kennedy  
 David/Diana Kent  
 Karlene Ann Kingery  
 Beatrice Klein

## Donor Honor Roll

### \$499 - \$100 Continued

Thomas Klein	Steve Morrison	Paul/Michele Regginello	<b>St. Mary's Catholic Church, Pella</b>
Emil/Margaret Klingler, Jr.	Barbara Mosley	Jerry/Carole Reid	<b>St. Mary's Church, Davenport</b>
Knights of Columbus Council 15430	Edwin/Mary Motto	Kathleen Repass	Jude Steil
Kevin/Nicole Koellner	Marcia Murray	Marilyn Reyes, CHM	Lillian Stevens, CHM
Barbara Kopel	Gary Neece	Rich Family Charitable Foundation	Owen Stipp/Nancy England Stipp
Kevin/Jane Koski	David/Angie Nichols	Ridgecrest Village	Lawrence/Ramona Stone
David/Mary Jean Lanaghan	Ronald/Amy Nimmer	Rosalia L Riedel, CHM	Don/Manette Storlie
Dennis/Pam LaRoque	Northwest Teens Encounter Christ	Margaret Ristau	Mary Stoughton
Stephen Latka	C. Arthur Ollie	Donovan Robertson	Gerald Stouvenel
George/Maurita Leahy, Jr.	<b>Kathryn O'Meara, CHM</b>	Joe/Mary Kay Rosenthal	George/Doris Straetker
Joan LeBeau, CHM	<b>Leo O'Neill</b>	Ruhl & Ruhl Realtors	Daniel/Patricia Strang
Chip/Joan Lee	Operative Plasterers,	Barbara Salisbury	Thomas/Nancy Streveler
Harvey/Sylvia Levin	Cement Masons	Paul/Rogene Schimanski	Cynthia Stowbridge
Leslie/Jean Lipinski	ORA Orthopedics P.C.	Darlene Schluensen	William/Patricia Sueppel
Local 581 Firefighters	Order of Saint Benedict,	Samuel/Nancy Schold	Michael/Susan Swegle
Louisa M. Alcott Kings Daughters	Collegetown, MN	Roman Scholtz/Mary Gaetz-Scholtz	Swiss Valley Farms
Patricia Lynch	Our Lady of Victory, Davenport	Kurt/Diane Schreiner	Carla Takes, CHM
MC Concrete LLC	Suzanne Page	Dan Schueneman	Catherine Talarico, CHM
Sandra Madsen	Kathleen Papageorgiou	Frank/Linda Schultz	JoAnne Talarico, CHM
John/Irene Mann	Bill/Jan Pearson	Louise Schwan	Grace Ann Tallman
Gloria Mashek	Carol Pentuic	Nancy Schwieters, CHM	Robert/Michelle Teel
Garvin/Gaycha Mayhew	Dieu-Le Pham	Walter/Marjorie Scott-Craig	The Establishment Theatre
Ted/Marilyn McAvoy	Roger Pigg	Seton Catholic Schools	The Rock Island Boatworks Jumers
Charles/Illio McBurney	Harriet Ping, CHM	Roberta Shadensack	Terrance Thiessen
Patrick/Margaret McCauley	Katie Pohlman	Joan Sheil, CHM	Ken/Janice Thomsen
James/Mary McCue	Karla Polaschek	Patricia Sloan Skinner	Kathleen Tomlonovic, CHM
Thomas/Lizbeth McDermott	Lloyd/Judy Pottratz	James Smith	David/Jacqueline Trees
Jim/Sherbourne McGrath	Anne Powers	Bea Snyder, CHM	Trinity Lutheran, Coal Valley
Nancy McManus	Janet Pullella	Spoja Properties	United Way of Wapello
Dennis/Heather Meade	Quad Cities Automatic Pools, Inc.	Patricia Spratt	Kathleen VanHyfte
Dale/Karolyn Meier	Quad City Federation of Labor	Jerry/Rose Springer	James/Jane Ann Varcho
Janet Miller	Quality Construction Services, Inc.	Angela Spurgetis	Delphine Vasquez, CHM
Jon/Shirley Miller	Jo Quandt	Denny/Bonita Squire	Mary Hilary Veith, CHM
Eric/Leslie Mitchell	Lucille Quilty	St. George Greek Orthodox	Marie VenHorst, CHM
Jane Moore	R.A. Jones & Company	Church, Rock Island	Patrick Verschoore
James/Barbara Morgan	R.O.C. Foundation	St. John United Methodist,	Vietnam Veterans of America,
	Natalie Regan	Davenport	Rock Island



## Donor Honor Roll

### \$499 - \$100 Continued

Mary Vogel  
Mary VoPova  
David/Karen Waite  
John/Sandra Walters  
Patrick F. Walton  
Tim/Cynthia Wells  
Michael White/June Gobas White  
Judith Williams  
Charlie/Stephanie Wise  
Sue Witte  
David/Thora Wolfe  
Duane/Shirley Zwicker

### Up to \$99

David/Judith Abbott  
Roger/Sheila Abbott  
Robert/Laura Abney  
John/Patricia Ackerman  
James/Nancy Adams  
Jerry Adamson  
Jack/Carol Albrecht  
Kathleen Allison  
American Mutual Insurance  
Association  
Lyle/Lindsay Andersen  
William/Kathleen Argo  
W.C. Arrington  
Artistic Endeavors  
Lacey Bailey  
Marge Barrett  
William/Mary Bartman  
Terrill Basile  
Pedro/Linda Bata  
Annette Bealer  
James/Dorothy Beck  
Laura Becker

Trish Beckman  
James Beeson  
Jennifer Beeson  
Nicole Beeson  
Rachel Beeson, CHM  
Wayne/Mary Behrens  
Lisa Bensmiller  
Lorraine Benson  
Howard/Jean Berchtold  
Donald Bergthold  
Joseph/Michele Bernauer  
Larry Betts  
Dale/Marilyn Bieber  
Dennis/Brenda Birkofer  
Marlene Bloomer  
Jim/Cathy Bodine  
Alfred/Mary Boeh  
Trish Bondi  
Peggy Bosley/Rosemary Paxton  
Anne Boultinghouse  
Janice Boyd  
Becky Bray  
Ashley Brenski  
Thomas/Maxine Brice  
Kevin Broders  
Edwin Brown  
Travis/Marilyn Brown  
Carl/Denise Bulat  
Mary Burbey  
John/Margaret Burkholder  
Gregory/Christine Bush  
Richard/Phyllis Cacciatore  
Duncan/Dianne Cameron  
Ray/Sandy Canada  
Paul/Glenda Carr  
Anthony/Margaret Carton  
Elizabeth Casillas

Susan Cassatt  
James/Nancy Cassens  
Susan Castro  
Jacki Catour  
Edward/Constance Cervantes  
Donald Chauna  
Jose Chavez  
Kenneth/Connie Chitty  
Leanna Christensen  
Todd/Michelle Christensen  
Christian Family Movement  
Galene Clark/Kellie Lyons  
David/Mary Clearman  
Robert Collier  
Charles Collins  
Kathleen Collins  
Paul Connolly  
Jeff/Mary Cook  
Kathleen Corrigan  
Barbara Costello, CHM  
Bill Costello  
Thomas/Joan Cox  
Creditcard Processing Association  
Thomas/Mary Pat Curnyn  
Micheline Curtis, CHM  
David/Deborah Dahlby  
Michele Dane  
Robert/Anna Debo  
Mark/Lindsay Deckert  
Maggie Delaney  
Diane DeMeyer  
Eugene/Beri Dennhardt  
Keith/Nelda Dice  
Peter/Ann Doll  
Arthur Donart  
Richard/Judy Downey  
Katie Doyle

Dan Drehoble  
Elizabeth Drewelow  
Mary Dubert  
Marlene Duclos  
Nora Dvorak  
Michael/Carol Eddy  
Miriam Ehrhardt, CHM  
Paul/Becky Elias  
Kate Elliott  
David/Margaret Ellis  
Alice Ellison  
Rae Elwood, CHM  
Ben Enlow  
Wilbert Ensenat  
Frances Erhart  
Paula Evitts  
Larry/Dee Ewing  
M. Lucille Feehan, CHM  
Dorothy Feeney  
Sylvia Feeney  
Kevin Fier/Christine Courter Fier  
Marsha Findlay  
Margaretha Fitzgerald, CHM  
Anabel Flaherty  
Michael/Nancy Flaherty  
Alan/Susan Fletcher  
Mike Flynn  
Louise Forbes  
David/Lori French  
Roger/Janet Friederichs  
Ben Froeschle  
Steve Fullmer  
Irene Gannon/Diane Steckel  
Doug/Lynn Garrison  
S. Gassner  
Gregg Gaudet  
Vivian George

## Donor Honor Roll

### Up to \$99 continued

Nancy Gesy

Larry/Mary Gillespie

Jared/Gina Glassford

Don/Sandy Glowacki

William/Sharon Glowacki

Bernard Glynn/

Charlene Munson-Glynn

Dorothy Goettsch

Sandra Gonzalez

Jim/Bobbi Goodin

Nancy Graham

Daniel/Margaret Gray

GRC Wireless Inc. - Shelter Alliance

Elaine Hagedorn, CHM and

Jeanie Hagedorn, CHM

Rita Hagner

Catherine Halligan

Sandra Hanford

Kathleen Hanley, CHM

Jim Harder

Julianne Hardy

Dieter/Kathryn Harle

Marian F. Harry

Alan/Margaret Hathaway

William/Kay Hausch

Carol Hawes

Donald/Katherine Healy

David Hebbeln/Lynne Schiffke

Rosemary Hendricks

Patrick Henry

Bernard Herber

Gary/Jeanne Herrity

Timothy/Karen Hintze

John/Kathleen Hlavacek

James/Linda Hoepner

Barbara Hoerner

Annette Hoexter

Jonell Hoffman

Dan/Linda Hopp

Margaret Hopper

Magdalene M. Horton

Aaron Hoste

Gina Howell

Lawrence/Coletta Huber

William Hull

Steven Jackovich

Tim/Angela Jaques

Daniel/Linda Johnson

Michael/Megan Johnson

William Johnson

Walter Jolley/Linda Baker

Mary Jones

Maxine Jones

Michael/Melanie Jones

Donald/Carolyn Judge

Steven/Karen Kalber

Mary Kaney

David/Susan Karwath

Hope Kealey

Marilyn Kelley

Ursula Keough, CHM

Gerald/Susan Ketelaar

Cynthia Koenes

Sharon Koens

Richard/Deborah Koestner

Bill/Jenny Kolwey

Jeanette Kopel, CHM

Barbara Korbelik

Scott/Tricia Kostner-Nicholson

Karin Kroush-Witherow

Jean Kruse

Ralphine Kruse

Sheila Krystofer

Daniel Kuckuck

Joann Kuebrich, CHM

Kevin/Rebecca Landwehr

William Langan

Betty Lange

Connie Lannan

Eldon/Ruth Larson

Edward Leahy

Albert/Yvonne Leemans

Evelyn Leonhart

Patrick Leuck/Diane Ickes-Leuck

Carol Lewis

Melva Lewis

Robert/Debbie Liagre

Pat Liedke

Lydia Liedman

Roger Liska

Joseph/Mary Ellen Lobaito

Kathleen Loomis

Becky L. Lopez

Donna Lopez

Brett/Katrina Loving

Thomas/Linda Lowe

Rona Loweth

Curtis Lundy

Lorraine Lynch

Mary Karen Macksey, CHM

Ronald/Pamela Madden

Thomas Madigan

Suzanne Mahmoodi

Daniel Malachuk/

Catherine Reinhardt

Tim/Anne Malecek

Suzanne Manhard

John/Janette Manion

Nancy Manion

Everett/Norma Manning

Elaine Marks

Traci Marsengill

Lewis/Shirley Marshall, Jr.

Mitch/Susan Marshall

James Martens

Jennifer Martens

Ralph Masengarb

Edward/Maryetta Masterson

Robert/Sandra Masterson

Ronald Mathias

Richard/Joyce Mattan

Janice McCann, CHM

Beverly McCreary

Stephen/Mary McFarland

Clark McFerren

Gretchen McKean, CHM

Judy McKnight

James Meade

Lorin/Rosemary Meade

Zachary Metzger

Kenneth/Kathleen Meyer

Evalee Mickey

James/Kathryn Middleton

Joann Milani

John/Joanne Miller

Linda Minich

Janet Minnehan

Carmen Minor

Kathy Mirocha

Leo Moench

Maria Monty

DeDe Moore

George/Karol Moore

Baylee Moorman

Donna Moritz

Donald/Janice Morrison

Kris Mueting

## Donor Honor Roll

### Up to \$99 continued

Irene Munoz, CHM  
N.R. Murphy  
Lila Murray  
Nancy Murray  
Paul/Martha Murray  
Mary Nagle  
Henry/Dolores Nanninga  
Allan/Mary Nelson  
Ronald/Rita Nelson  
Bonita Neumeier  
Patricia Nichols  
William/Krista Nixon  
Cody/Tina Noble  
Randy/Mary Norton  
Tiffany Norwood  
Rosemary Noth  
Rosemary Ocar  
**Tom/Marcia O'Connor**  
**John/Patricia O'Donnell**  
Sarah Oliver  
Vickie Olson  
**Ed O'Melia**  
Christa Orfitelli  
Ana Maria Orozco, CHM  
Jim/Mary Orr  
Pedro/Suzanna Ortiz  
Robert/Con-E Osmers  
Janice Paradiso  
Nicholas/Bridget Paradiso  
James Parizek  
Carol Parr  
Robert Pearce  
Claudellen Pentecost, CHM  
Carols/Pam Perez  
Calvin/Kay Perry  
Judith Petersen

Dean Piatt  
Lauren/Mary Pike  
Jan Pinnow  
Christopher Piro  
Mary Lou Podzimek  
Marilyn Pohlman  
Marc Possin  
Michael/Kelly Poster  
Nancy Prouty  
Robert/Pat Pruden, Sr.  
Theodore/Audrey Querin  
Beverly Quigley  
Kathleen Quinn  
Gabby Rafferty  
Carole Ranson  
KJ Rebarcak  
David/Colleen Reese  
Joan Marie Resnick  
Rosalind Restelli, CHM  
William/Elaine Rice  
Patricia Ricketts  
Matthew/Susanna Rivera  
Randy/Toni Robertson  
Rock Island Integrated Servcies  
Lori Rodriguez  
Franklin/Rose Roe  
David/Barb Roeder  
Roberta Roehlk  
Catherine Roller  
Leslie Ronnebeck  
Paul/Vicki Rosmann  
James/Twyla Salsberry  
Beverly Samberg  
Barbara Schaab  
Jessica Schadel  
Thomas/Jeanne Schebler  
James/Carol Schlichting

Joseph/Bernadine Schloemer  
Donald/Kathleen Schmidt  
Robert/Rosalie Schmidt  
Shirley Schmidt  
Robert/Peggy Schneden  
David/Cheryl Schroeder  
Dolores Schuh, CHM  
Joan Marie Schuster, CHM  
Greg/Beth Scott  
Scott/Christy Sehlin  
John/Joan Sherwin  
Jane Siefers  
Patricia Sierk  
David/Christine Sigwarth  
Marietta Smeaton  
Beverly Smith  
Joan Smith  
Kenneth/Loretta Smith  
Marian Smith, CHM  
Michael/Sarah Smith  
Bill/Kay Snowden  
Margaret Solberg  
Carol Sommer  
South Park Presbyterian Church,  
Rock Island  
Amy Spataru  
Dorothy Spiess  
Daniel/Kathleen Springer  
St. Joseph Catholic Church, DeWitt  
Diane State  
Bob/Georgia Steeber  
William Steinhauser/  
Laurie Boyce-Steinhauser  
Emilie Stichnoth  
Robert Stone  
Michael/Mary Fran Stopulos  
David Strayer

Eric/Cathy Strelow  
James Stroehle  
Super Target District Office 1583  
Temple Baptist Church, Davenport  
Ronald/Sandra Tigges  
Kathy A. Titus  
Frances Toal  
Rick/Mary Toom  
Charley/Jill Troup, Jr.  
John/Susan Troy  
Kenneth/Regina Turner  
Louis/June Urmie  
Dennis/Barbara Van DerGinst  
Mikel/Wendy Van Dyke  
Marilyn J. Van Tieghem  
Nicholas/Brenda VanCamp  
Cecelia Vandenberg, CHM  
Kenneth Vandersnick  
Lori A. VanNatta  
Elias Vargas  
Timothy/Teresa Vaughn  
Trini Velasquez  
Betty A. Volenec  
Carole Von Eschen  
Darrin/Diane Votino  
Susan Votroubek  
David Wallace  
Robert/Marcia Walsh  
Mary Warren  
Judith Waters  
Hal/Margaret Weidner  
Carol Weiland  
Karen Weimer  
Harold/Rosann Welsler  
John Wente/Barbara Bolton  
Ruth E. Westmoreland, OSF  
Johnny While

## Donor Honor Roll

### Up to \$99 continued

John White  
Jane Widmeyer  
Jean Willadsen  
Buel/Mary Williamson  
Judith Williamson  
Wines for Humanity  
Robert/Rita Woodham  
David Wright/Katherine Sircy  
Anita Wubbena  
Barbara Wuestenberg  
Clarice Wunderlich  
Michael/Kathleen Wynn  
Karen Yarkosky  
Anthony/Barbara Zimanek

### In Memory Of:

Paul Adams  
Maria Irene Andersen  
Helen Angelos  
Richard Batcher  
Charles Bell  
Joan K. Bennett  
Gene Bleuer  
Richard/Marge Brown  
Marion Bugos  
Keith Burau  
Rose Ellen Coontz  
Lisa Cornish Burr  
Marjorie Clifford  
Hayden DeDecker  
Garnie Dennhardt  
Eldon G. Dirks  
Bill Dolan  
Kevin Dolan  
Henry G. Ensenat

Olga Ensenat  
Marie Finnegan, CHM  
Charles Hagner  
Patrick Hagner  
Hiram L Hardy  
Margaret Hart  
Don Holman  
Janssen-Tierng Family  
Blanche Lou Kay  
Gerald Ketelsen  
Gerald Knopick  
Ann Leahy, CHM  
George/Helen Lannan  
LeBeau Family  
David Lioen  
Kevin Lioen  
Dorothy Lorber  
Larry Lynch  
Leona Mary Manning, CHM  
Mickey Mante  
Roger Maris  
Marycrest Sisters  
Jeff Masengarb  
Betty McBurney  
Bob/Mae McBurney  
Jean McBurney  
Roy/Alma Miller  
Donald Moench  
George Monty  
Becky Mosler  
Randy Nordland  
**John O'Hara**  
Doug Page  
Earl/Jeanette Parr  
Marcelo Perez  
Restelli Family  
Mariana V. Reyes

Mary Reynolds  
Charles Ricketts  
Joe Rogers  
Madeleine Marie Schmidt, CHM  
Jordan Schmidt  
John H. Smith  
John V. State  
Ana Strain  
Kathleen Tallman  
June Templeton  
George Thomas  
Daryl W. Vanderflugt  
Andrea Vargas  
Bernard Vogel  
Charles Wallerich  
Thora Walshe  
Mary Louise Walsh  
Frances Wolfe

### In Honor Of:

All God's Children  
'Angel' Harriet  
Richard Barcliff  
Reverend Bresnahan  
Vince/Linda Burau  
Megan Chitty  
CHM Administrative Staff  
CHM Cabinet 2008-2012  
CHM Jubilarians  
Jim DeBisschop  
Anthony Ego  
Anna M. Erhart  
Good Health  
Marion Greenwood  
Staci Hammill  
Selma W Hanley

Diane Harris  
James R. Jenkins  
Lyllian Jorgenson  
Beatrice Klein  
Ed Lioen  
Jo Lioen  
Mark Lioen  
John Madsen  
Daniel/Virginia Malachuk  
Marycrest Sisters  
Dick/Joyce Mattan  
John/Kathy McGrath  
Kathryn McKnight  
Dennis Meade  
Tricia Mendoza  
Evan Meyermann  
Collin Meyermann  
Nolan Meyermann  
Barb Montgomery  
Ronald Rehmann  
Richard/Bette Seres  
Carla Takes, CHM  
Maribeth Takes, CHM  
Vietnam Veterans  
Maria Vittetoe, CHM  
Dale Wellman  
Jeff Williamson

Every effort has been made to make the Donor Honor Roll complete. If you note an error, please notify us so we can correct our records and give proper credit to our contributors.

## CHM Challenge Grant Needs Your Help



Sr. Johanna Rickl

Early in April of this year, the Sisters of the Humility of Mary announced the offering of a challenge grant to benefit Humility of Mary Shelter, Inc. The goal of this grant is to raise \$250,000 by April 30, 2014. The first \$100,000 raised will be matched by the Sisters of the Humility of Mary. As of June 30, 2013, \$39,737 has been received and designated as match. We need your help to reach the goal of this challenge!

1. \$60,263 is needed to receive the \$100,000 in match funds;
2. An additional \$50,000 is needed to meet the goal of the challenge.

Humility of Mary Shelter, Inc. has an operating budget of \$1,562,771. Government grants in the amount of \$1,038,360 have been approved and, for the remaining funds, we are dependent on United Way, private grants and gifts. The challenge with all of the government grants is that we must spend the money for the specific purposes of the grants and then request reimbursement. There are four HUD grants that make up a big portion of the government grants. These grants have different starting and ending dates throughout the year. All of those grants ended by the end of our 2013 fiscal year. The funding for the renewal of these grants has been awarded, but we are still waiting for the contracts because HUD is still making changes in the way these funds can be used. As a result of these delays, we have had expenses of five months for one of the grants, three months for another and two months for the remaining two grants. At the end of our fiscal year, we are showing a receivable of \$133,200 from these HUD grants. It is normal to have a delay of a couple months but this year is very unusual. It is very difficult to operate an organization with these kinds of cash flow challenges and that is why this challenge grant is critical to the future of Humility of Mary Shelter, Inc. We need to build a contingency fund that is available to cover these delays in funding. Under ordinary operations, there is always a delay of four to six weeks and that has been manageable.

We will appreciate any gift you can provide to help us meet the challenge provided by the Sisters of the Humility of Mary. Please indicate on your donation if it is intended for the match.

We are approaching a five year anniversary and continue to be amazed at the wonderful support provided by all of you, our donors and volunteers, who have stepped forward to take that leap of faith with us to provide shelter and supportive services by a professional, caring staff for our brothers and sisters who struggle with homelessness and the many issues that have led them to be homeless. Thank you for walking with us, supporting us and all we serve.

- Sr. Mary Ann Vogel, Finance Director

# Private Grants Help Cover Difficult to Fund Agency Needs

Private grantors are crucial to the funding of the Humility of Mary Shelter, Inc. Their partnership with us is greatly appreciated.

The Doris and Victor Day Foundation and In From the Cold funded new mats for overflow guests at shelter and In From the Cold paid for new tables for the day room.

The Scott County Housing Council with funds from the Scott County Regional Authority and the Riverboat Development Authority approved requests for security cameras and maintenance expenses.

Funds from Wells Fargo Bank and St. Andrew's Church as well as the second year of a three year grant from the Amy Helpenstell Foundation and an emergency request to United Way provided for a critical need to meet operation costs.

## James and Anita Jenkins Demonstrate Generosity in a Unique Way

When Jim Jenkins retired from the legal department at John Deere in February, he turned the emphasis of his accomplishments around and recognized the work of three nonprofit organizations in our community. Humility of Mary Shelter, Inc. was fortunate to have been one of the agencies that had caught the attention of Jim and his wife, Anita. It was a real privilege to attend Jim's retirement reception and hear the accolades from Jim's co-workers as they talked about the ways Jim had influenced the legal department at John Deere and the many ways Jim and Anita had affected them personally.

I appreciated the opportunity to speak to Jim and Anita and Jim's colleagues who attended Jim's retirement. What an outstanding couple who would focus the attention at this event on our men and women experiencing homelessness! Their gift of \$10,000 from the James R. and Anita Horne Jenkins Family Foundation was a tremendous blessing. Thanks, Jim and Anita for sharing your time and your gift with HMSI.  
~Sandra Walters, Director



### What will you sell in your lemonade stand?

While at the front desk, a small boy came in with his father and younger brother. The little boy introduced himself as "Grant" and had with him a small container full of money that he raised all by himself at a lemonade stand to donate to our shelter. The idea was entirely his own, according to his dad, and said that he really wanted to help the homeless people. He took a small tour of the shelter with me, and told me that he got the idea from when they donated some food to the animal shelter, and thought that the animals would get a home faster than homeless people would. So he decided to work at his project for two days. He told me that he 'didn't just sell lemonade', but also water, pop, and Diet Mt. Dew as well as popsicles. Grant took a picture under our new banner in the basement, and didn't seem to notice Sister Nancy, Melanie and myself beaming or holding back tears. When they left, Grant shook my hand, and gave me a great big hug. His dad also shook my hand, and I told him that he and his wife really must be great parents, because they were doing something very right.

~submitted by Jess, Service Coordinator

Volunteers are always needed. If you have a special skill or talent that you would like to share, please call Melanie at 563/322-8065.

Opportunities include: professional services (carpenter, electrician, concrete), committee work, life skill classes, supply drives, haircuts, committees (Development or SleepOut), speakers bureau, outdoor maintenance, gardening, deep cleaning, drivers and donation area.

Donations: Shelter is always in need of the following items that we provide free to our participants: toothpaste, toothbrushes, deodorant, razors, toilet paper, socks, undergarments, coffee, coffee cups, sugar, creamer, towels, washcloths, sheets and blankets. We also accept new or gently used adult clothing. The *above supplies* are accepted daily from 9am – 6pm.

In an effort to be good stewards of your donation please refrain from bringing donations outside of our Wish List to the shelter. We do not have a retail store and disposing of these items is costly.

Furniture may be accepted on a pre-approval basis.



# Night at the Shelter

Night at the Shelter is our year round fundraising campaign that is designed to involve the community and encourage you to assist in our mission to help the homeless in the Quad City Area. Our goal is to find a sponsor for 82 beds each night of the year. **Let's Do the Math...**

$$\begin{array}{r}
 82 \text{ beds} \\
 \times \quad \$10 \text{ per bed} \\
 \hline
 \$820 \text{ Night at the Shelter}
 \end{array}$$

\$820 a night for the full year will raise \$299,300. This amount allows us to fill our funding gap in Community Gifts. This is why your financial contributions are so important.



The Night at Shelter SleepOut is designed to raise awareness about homelessness in the QC Community and to raise funds to help provide beds and support for homeless persons served at Humility of Mary Shelter, Inc.

A benefit for Humility of Mary Shelter, Inc.  
at Modern Woodmen Park  
on Friday, October 4, 4 pm to Saturday, October 5, 8 am

### Tentative Schedule of Events

#### Friday, October 4

4 to 10 pm

Registration and Activities

Activities include:

Build Your Own Shelter contest, music, educational opportunities and games.

5:30 pm Stone Soup Supper

6:30 pm Opening Ceremony

10 pm Movie Begins

#### Saturday, October 5

7 am Breakfast

8 am Closing Ceremony





Making a Difference...one life at a time - these are excerpts from notes that our clients have left their Service Coordinators  
Hello,

My name is Fred Larson, I am a Vietnam era vet, 60 years old and a Christian. Due to unfortunate circumstances, I found myself short of finances and homeless, until I was introduced to a couple of **guardian angels with the "Valor Program"**. I was sleeping in my car, because, due to the extremely cold weather, all homeless shelters were filled to capacity. Long story short, with the help of Jessica and Cathy (Valor Program Caseworkers) I now have a small apartment with furniture (from a local veteran with an outreach mission) to be delivered tomorrow. God has sent me angels, to whom I can never show or express my gratitude or thankfulness for. At least, even with my inability to communicate, especially in letter form, I wish to at least, try and give my testament to the Valor Program, to Cathy and Jessica. **I wouldn't be where I am today, encouraged. Thank you and God bless you for your time.**

~ Fred E. Larson, VALOR participant

I am going to Oaks on the 23rd at 9:00am. Thanks for everything, you have been a blessing. Take care.

~ an emergency shelter participant

Taken from a greeting card:  
(front) Just a small token

**(inside) ....of my big appreciation. Thanks!**

Handwritten inside:

To staff & especially Megan and Barb for helping me in stormy days!  
~ a female emergency shelter participant

I  
Got  
The  
Job!

I'm on my way  
to Iowa City and  
then to Des  
Moines. Thanks  
for all your help.



John and his Service Coordinator, Alex

Having been here (Humility of Mary Shelter) before, I am somewhat aware of the services and programs offered here. I honestly believe that if I had been consistent with programs before I would most likely not be in my current situation. My feeling for the shelter and its staff is first of all grateful. A little about myself is that I am suffering from chronic bi-polar disorder and PTSD along with COPD, which is a lung disease. As a result of these I am unable to work. Enough about me; as far as the Humility of Mary Shelter, for the most part (no place or no one is perfect) I do believe that if you are an individual who needs assistance and will take the initiative to work with the staff and yourself, you will see a positive difference in your situation.

~ John Coulter, current emergency shelter participant

## Thank You

I really want to thank you for believing in me and being there for me. I wish you and your family all the blessings God has for you.

~ female emergency shelter participant



~ The following story was submitted by Jess, Service Coordinator for Emergency Shelter participants...

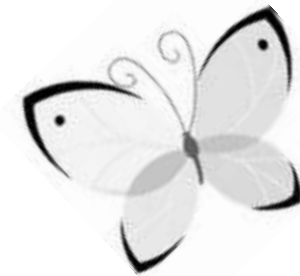
M came to shelter after being discharged from his committal (mental health related) at Robert Young. His Case Manager informed me that M's landlord had thrown all of M's things away, including his birth certificate and identification cards, during M's eviction. M had few to no housekeeping skills and his apartment had been extremely unsanitary. While getting back on a mental health medication routine, M, his Case Manager Scott, shelter staff and myself were able to find M a new apartment, secure assistance through SEAP (local assistance program) for furniture for M's new apartment, purchase him a new birth certificate, teach chore/ housekeeping skills, and access a program that would assist M in building and maintaining skills that would keep his new apartment clean and safe. M left shelter with household items donated by the community and was given many hugs and handshakes by other shelter participants as he left. Scott was very happy to see M using so many social skills.

Everything Good comes  
from above. In the Bible.

!!

For being a wonderful  
Coordinator! A bright,  
enthusiastic career woman.  
Thank You! For all your  
help & guidance. Who ever  
hired you- has a good judge  
of character. Looking for-  
ward to your smile & helping  
my peers. With Blessings

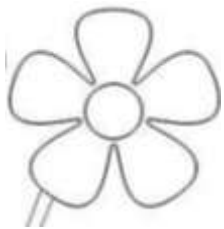
## In Appreciation for Twenty-Three Years Retiring September 1, 2013



In September of 2008, Humility of Mary Shelter, Inc. began operations to prevent closure of the community shelter for adult men and women and a transitional housing program for 17 veterans. Five years later, I am sending my farewell to the thousands of donors, volunteers, co-workers, participants, former participants and others who have in some way played a part in this exciting adventure. The agency and the position of director is not what it was even five years ago. It's a tremendous responsibility being turned over to Dr. Julie Bockenstedt, new Director of HMHI and HMSI. We are fortunate to have someone with a passion for the mission and the work with individuals experiencing homelessness. Julie has a long background with the agencies she now directs. She has the education and experience essential to lead our agencies through changing times. I will miss the work and the people I have experienced as the Founding Director of these agencies, but am pleased to leave this ministry in capable hands.

I will always remember the people I have worked with and for over these five years. I will remember the tremendous dedication and commitment of the staff, the support of the Congregation of the Humility of Mary as the Sisters came through time and again with their volunteerism, their financial support and their prayers, and the Board members who trusted me to guide the monumental task of opening the shelter and to lead this second agency. Most of all I will remember the wonderful men and women who stayed at the shelter with their attitudes of determination and their stories of success.

At my request, I have celebrated my retirement with the Board of Directors, the staff of HMHI and of HMSI and the Sisters of Humility.



I look forward now to spending more time with my family, gardening and reading.  
May God continue to bless the work of Humility of Mary Shelter, Inc.

Sandy Walters, LISW, MSW



Board members thank Sandy Walters for her many years of leadership as the Director of Humility of Mary Housing, Inc. She began this ministry to single-parent families experiencing homelessness over 22 years ago and helped build it from the ground up to its present state.

When Sandy first began to work on this project, there was only one house purchased for a minimum amount of money. After reconstruction of the house inside and out, it was made available to the first clients.

Step by step, Sandy helped develop the dream of providing homes and education to single parent families. As the years passed, many young parents learned how to care for a home, how to be responsible for becoming educated, and how to manage their time and money.

Many young families have profited from the discipline and skill of Sandy Walters. Sandy will be missed by the people at Humility of Mary Housing, Inc. and the HMHI Board of Directors. She has been an inspiring leader and a person admired by the Quad City community.

Sandy has been a person of integrity and selfless giving. She will be remembered for her efforts to keep Humility of Mary Housing, Inc. financially stable. The Quad City community has responded with encouragement and generosity to the requests for financial support over the past 22 years.

During the last five years Sandy has also been the Co-director or Director of Humility of Mary Shelter, Inc. She has met the challenges of both agencies so that they continue their vital role in the Quad City community.

In recognition of her dedication and years of quiet leadership, Sandy received the Congregation of the Humility of Mary Peace and Justice Award in June of 2008. This award is given to an individual who exemplifies the commitment of the sisters to the work of peace and justice. In her tireless work **with the poor and those in need, Sandy exemplifies a “woman attentive to the spirit in the signs of the times.” This award is bestowed upon a deserving woman who has not been widely recognized for her work.**

We thank you, Sandy Walters, for your many years of belief in the missions of Humility of Mary Housing, Inc. and Humility of Mary Shelter, Inc. May you enjoy some time of peace and relaxation as you begin your well-deserved retirement. Thank you and may you know our thoughts and prayers will be with you.

Sr. Greta Fitzgerald, Board Chair  
Humility of Mary Shelter, Inc. and Humility of Mary Housing, Inc.

## Board of Directors

Margaretha Fitzgerald, Chairperson  
Congregation of Humility of Mary

Johanna Rickl, Vice Chairperson  
Congregation of Humility of Mary

Judith Carrara, Congregation of Humility of Mary

Connie Coopman, Alcoa

Micheline Curtis, Congregation of Humility of Mary

Kassandra Daly, Western Illinois University

Paul Elias, PhDM, Scott County Jail

Therese Gerwe, Quad City Bank & Trust

Deana Lilley, Family Resources

Kimberly Moreno, Western Illinois University

Bill Pearson, Community Volunteer

Rita L. Sterling, Dept. of Veteran Affairs

Curtis M. Williams, Western Illinois University

### Leaving the Board during the fiscal year:

Laquiesha Antony Morgan,  
Scott County Sheriff Department

Douglas Page, Community Volunteer

Volunteers are an essential part of Humility of Mary Shelter, Inc., providing crucial support services that are vital to the shelter and the well-being of our participants. Every day, willing volunteers donate their time and energy so that HMSI can fulfill its mission of providing temporary housing and services to the homeless. Whether they are sorting donations, doing laundry, answering the telephone, providing computer classes, doing yard work, painting or filing, Humility of Mary Shelter, Inc. volunteers know that their work makes a difference.

During this reporting period 120 volunteers provided 2,543.75 hours of service.

Paul Allen  
 Laquiesha Antony Morgan  
 Augustana -  
     Emerge Leadership Team  
 Eryka Berglund  
 Bob/Nancy Boutelle  
 Sarah Bradford  
 Deb Brix  
 Patti Jo Brown  
 Builders - Hahn Concrete  
 Valerie Bustle  
 Leann Cabage  
 Judith Carrara, CHM  
 Brittany Carter  
 Centennial Construction  
 City of Davenport  
 Marlo Clarke  
 Construction Partners  
 Connie Coopman  
 Micheline Curtis, CHM  
 Brian Dahlstrom  
 Cassandra Daly  
 Lindsay Deckert  
 Deere & Company - Planning/  
     Guest Services Team  
 Kim Dodson  
 Paul Elias

Gabriela Fisch  
 Margaretha Fitzgerald, CHM  
 Sandi Frericks  
 Lynn Garrison  
 Therese Gerwe  
 Kevin Gibbs  
 Billie Greenwood  
 Hamilton Technical College  
 Bernie Hansen  
 Health Habits  
 Heritage Church, Bettendorf  
 Jenna Iwanski-Murphy  
 Franklin Jimenez  
 Wayne Jochmann  
 Steve Kalber  
 John Kessler  
 Cyndi Koenes  
 Tabbatha Lancaster  
 Vicki Liebe  
 Deana Lilley  
 Donna Lopez  
 Diane Madesian  
 Kathryn McKnight  
 Kimberly Moreno  
**Pat O'Rourke**  
**Stella O'Rourke**  
 Olivia Ortega

Alicia Owens  
 Douglas Page  
 Caitlin Painchaud  
 Bill Pearson  
 Preemption United Methodist  
     Church  
 Laura Quast  
 Annette Rettig  
 Johanna Rickl, CHM  
 Greg Riesson  
 Margaret Ristau  
 John Robinson  
 Janet Rossmiller-Dolan  
 Neal Rowles  
 John Schell  
 Brian Schlump  
 Mike Simmons  
 Ashley Sorensen  
 Dorothy Spiess  
 St. Ambrose, Urban Plunge  
 St. Alphonsus Catholic Church,  
     Davenport  
 Rita L. Sterling  
 Diane State  
 Jeremy Suman  
 Trinity Church, Rock Island  
 United Way Staff

**We're not  
 LION,  
 we have great  
 volunteers!**

Reggie White  
 Todd White  
 Curtis M. Williams  
 Willman Construction  
 Cathy Wright



Volunteers are always needed. If you would like to become a part of our amazing team please call Melanie at 563/322-8065.



Assistant Program Director  
In collaboration with the Program Director, Christie Adamson will oversee emergency shelter operations, permanent housing programs, veteran service programs and approximately 30 staff.

**Christie's journey with Humility of Mary Shelter, Inc.** started when she and her then fiancé, Patrick volunteered doing laundry once a week. Christie soon became part of our staff as a Service Coordinator and then a monitor. Christie and her husband Patrick operate ComedySportz in Rock Island and are the proud parents of 2 1/2 month old Claire Lynn.



**Grants Manager  
Position Initiated**

A significant percentage of the Humility of Mary Shelter, Inc. budget is covered by local, state and federal grants. We welcome Kathy Meier, MBA, who will write and manage grants for HMSI.

Kathy, a native of Davenport, has fourteen years of experience writing grants in the public and private sector as well as with non-profit organizations. Kathy is married and has four children. She enjoys reading, walking and swimming.

**Humility of Mary Shelter, Inc. Staff**

- \*Sandy Walters, Director
- \*Julie Bockenstedt, Director
- \*Mary Ann Vogel, CHM,  
Finance Director
- \*Jeni McGuire,  
Assistant Finance Director
- \*Kathy Meier, Grants Manager
- Cindi Gramenz, Program Director
- Christine Adamson,  
Assistant Program Director
- Jodi Beechum-Kelly, Shelter Monitor
- Brad Boyles, Shelter Monitor
- Megan Chitty, Service Coordinator
- Kathleen Collins,  
Mental Health Counselor
- Mike Constantino, Maintenance
- Larry Cook, Shelter Monitor
- Lisa Devlin, Shelter Monitor
- Rosemary Dreessen, Shelter Monitor
- Amber Duncan, Shelter Monitor
- Tim Duncombe, Shelter Monitor
- Teresa Fitzgerald, Shelter Monitor
- Alexandra Frakes, Service Coordinator
- Staci Hammill, Service Coordinator
- Michelle Henriksen, Shelter Monitor
- Melanie Jones, Office Manager
- Cathy Jordan, Intake Coordinator  
and VALOR Program Lead
- Tim Kelly, Shelter Monitor
- Auston McLain, Shelter Monitor
- Dave McMillen, Shelter Monitor
- Jessica Mohr, Service Coordinator

- Erin Moore, Service Coordinator
- Tiffany Norwood, Service Coordinator
- Elaine Pritchett, Shelter Monitor
- Peggy Quilty, Service Coordinator
- Rikki Saldivar, Shelter Monitor
- Jessica Schmidt, Service Coordinator
- Nancy Schwieters, CHM,  
Computer Lab
- Eddie Smith, Shelter Monitor
- Karla Sweeney, Service Coordinator
- Ashley Velez, Shelter Monitor

*\*Denotes a shared employee with Humility of Mary Housing, Inc. Sharing employees is one way the Board of Directors keeps Administrative Expenses low.*

**Contact Us:**

563/322-8065 Main  
563/322-8261 Fax

1016 West 5th Street,  
Davenport, IA 52802

hmsiowa@gmail.com  
humilityofmaryshelter.com

**“LIKE” us on Facebook !**



1016 West 5th Street  
Davenport, IA 52802

[www.humilityofmaryshelter.com](http://www.humilityofmaryshelter.com)

Non-Profit Org.  
US Postage  
PAID  
Permit No. 3200  
Davenport, IA